

# Quality Connection

Dedicated to Quality Kia Vehicle Repairs

SPRING 2016 VOL. 11 | NO. 1

## 2017 SPORTAGE

[Models may vary]

[www.kia.com](http://www.kia.com)

### PAINLESS PANE

Follow these directions  
for an easy window fix

### HEEDING A WARNING

Illuminated brake warning lamp  
could be due to poor grounds

### SPRING HAS SPRUNG!

And so have your service and  
maintenance opportunities



Genuine Parts

# “Show Stopper” Kias

From auto shows to the street, Kia is creating excitement

“Show stoppers.” There’s no better way to describe the vehicles Kia has displayed at some of the industry’s biggest automotive shows.

Let’s start with the excitement that was generated last fall at the Specialty Equipment Market Association Show (SEMA) when Kia displayed four new vehicles customized to showcase unique geographic regions. To capture the essence of South Beach, Kia displayed its sliced-top, roadster-styled AIA Optima, featuring a butter-soft cream and titanium leather interior. At the opposite end of the spectrum was the Forte Koup Mud Bogger sporting a four-inch body and suspension lift and meaty 28-in. off-road tires for rooting through southern mud.

Shortly after SEMA, Kia made another exciting and bold statement at the Los Angeles Auto Show by unveiling the all-new 2017 Sportage. The fourth-generation Sportage, Kia’s longest-running nameplate, wraps stunning contemporary design around a structure that is both stiffer and more spacious than before. Advanced driver assistance technologies, significant suspension and steering improvements,



and available intelligent AWD vastly improve the Sportage’s driving dynamics while premium materials and world-class craftsmanship help separate it from its utilitarian rivals.

Next, at the North American International Auto Show in Detroit, Kia unveiled Telluride, a luxury SUV concept featuring a muscular stance and state-of-the-art technology. Also unveiled were the refreshed 2017 Forte, featuring a new efficient 2.0-liter 4-cylinder powertrain, and the Forte5 distinguished by a seven-speed, dual-clutch transmission and newly available convenience and driver-assisted features.

To add to the excitement, Kia introduced three new models at the Chicago Auto Show. Making its global debut, the Niro Hybrid Utility Vehicle is a no-com-

promise vehicle that combines driving enjoyment with an eye-catching “un-hybrid” design, functional utility and hybrid efficiency. Kia also debuted the Optima Plug-in Hybrid, a vehicle distinguished by a host of new technologies and features, including a more powerful hybrid engine, a smarter and more robust telematics system, exterior design enhancements, and greater interior refinement. Last but not least, was the unveiling of the Optima Hybrid featuring the same full redesign – inside and out – as the conventional gas-powered model, the all-new fourth-generation Optima sedan. Its new hybrid powertrain targets a 10 percent improvement in fuel economy over the outgoing model.

Of course, all of the excitement generated at the auto shows winds up on the street...and in your shops where you can keep the excitement going by using Genuine Kia parts. Keeping Kia vehicles genuinely Kia keeps your customers happy, which is the most exciting thing of all.

## Kia Motors America, Inc.

All trademarks and tradenames are the property of their respective owners.

## IN THIS ISSUE

VOL. 11 | NO. 1 SPRING 2016 | *Quality Connection* is published by Kia Motors America



### Painless Pane

Follow these directions for an easy window fix



### Heeding A Warning

Illuminated brake warning lamp could be due to poor grounds



### Spring Has Sprung!

And so have your service and maintenance opportunities



# Genuine Kia Parts.

Expect Nothing Less.



2015 Cadenza Limited

ALWAYS SPECIFY GENUINE KIA PARTS FOR THE  
HIGHEST LEVEL OF FIT, FINISH & QUALITY.

Kia vehicles are at the forefront of today's automotive design. Unique details in our Kia vehicles demand precise engineering and fit. Kia customers deserve Genuine Kia collision replacement parts to keep them satisfied for years to come. Our brand's popularity continues to grow meaning more Kia customers for your shop.

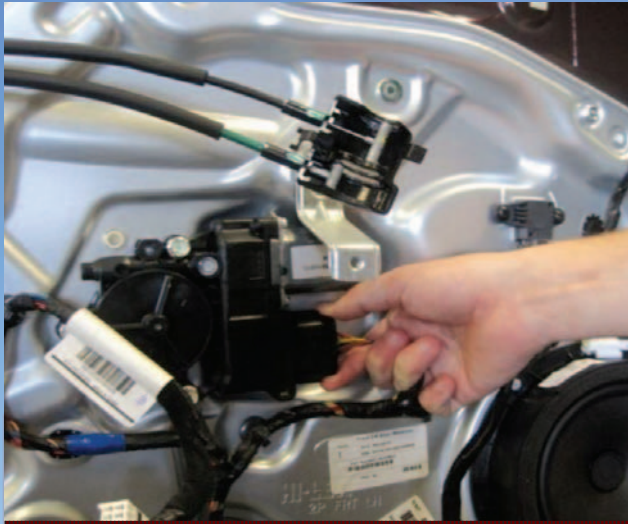
**Contact your local Kia dealer today for assistance and delivery of your parts.**



Genuine Parts

# Painless Pane

Follow these directions for an easy window fix



» **WARNING:** Do not attempt without the proper skills, training, or tools. Vehicle servicing performed by untrained persons could result in injury to those persons, to others, or to the vehicle.

» This and other technical information is available at [www.Kiatechinfo.com](http://www.Kiatechinfo.com).

» All images are for illustration purposes only.

➔ When the driver's side window is inoperable, it's a bit of an inconvenience. Fortunately, the remedy to fix it is easy. Some Sorento (XMa) vehicles, produced from January 28, 2010 through May 16, 2011, may exhibit this condition and warrant the replacement of the power window motor as outlined in this article.

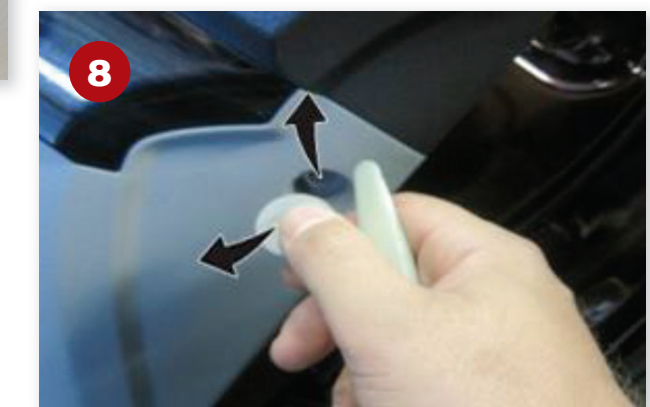
## Service Procedure

1. Turn the ignition to the off position and open the driver's side door.
2. Remove the quadrant inner cover using a non-marring plastic remover. *Caution: Exercise caution when removing the quadrant inner cover as it can be easily damaged.*
3. Push the lock pin to disconnect the tweeter connector.

MODEL FEATURED:  
2011-2012  
Sorento (XMa)

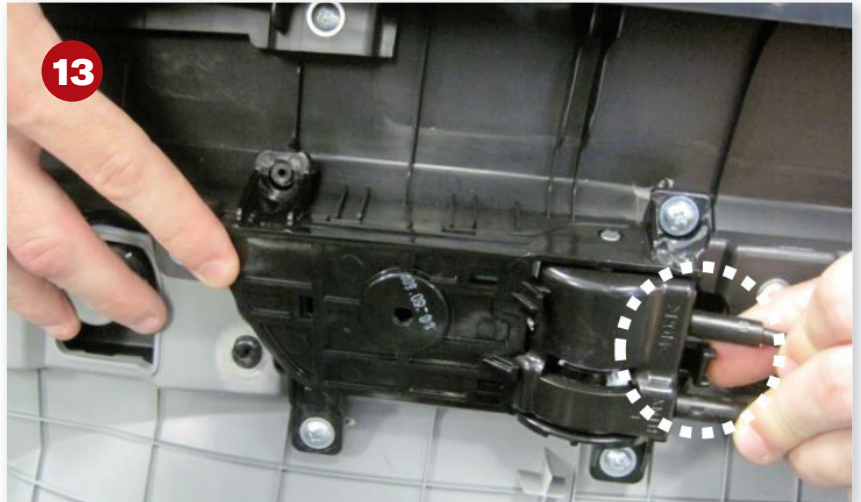
Part Name	Part Number	Qty.
MOTOR ASSY-FRONT POWER WDW, LH	82450 2P010	1





- 4.** Remove the door grip handle cover using a non-marring plastic remover.
- 5.** Remove the screw securing the upper portion of the door grip.
- 6.** Remove the screw securing the lower portion of the door grip.
- 7.** Remove the cover from inside door handle trim area and remove the screw.
- 8.** Remove the cover from innermost door panel mounting location and remove the screw.





**9.** Remove the cap from inside the door handle and remove the screw.

**10.** Remove the cap from outermost door panel mounting location and remove the screw.

**11.** Use a non-marring plastic remover to dislodge the bottom edge of the door panel.

**12.** Remove the door panel by gently pulling on the storage compartment.

**13.** Push the hook and remove the inside handle cage.

**14.** Disconnect the connectors from the door panel.

**15.** Disconnect the power window motor connector and remove the bolts from the power window motor.

**16.** Install the replacement power window motor by reversing the removal steps.

**17.** Reinstall all other removed components by reversing the removal steps.

**18.** Test the operation of the power window motor to confirm proper operation. **KIA**



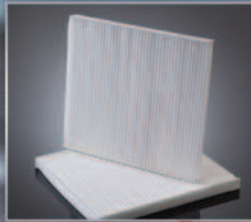
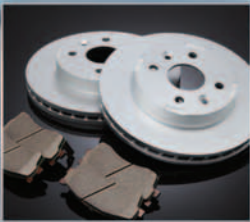


# Genuine Kia Parts.

Expect nothing less.



2015 K900 Luxury V8  
with VIP Package Shown



Kia vehicles are at the forefront of today's technological engineering. Unique components in our Kia vehicles demand precise engineering and fit. Kia customers deserve Genuine Kia replacement parts to keep them satisfied for years to come. Our brand's popularity continues to grow meaning more Kia customers for your shop. Always specify Genuine Kia Parts for the highest level of fit, function and quality.

**CONTACT YOUR LOCAL KIA DEALER TODAY FOR ASSISTANCE AND DELIVERY OF YOUR PARTS.**



**Genuine Parts**

# Heeding a warning

Illuminated brake warning lamp could be due to poor grounds



Ground point g19 – g20 is located behind ABS/ESC Unit on LH (driver's) side outboard panel.

**Required SST:** Universal Scan Tool with latest software version installed

MODEL FEATURED:  
2006-2007  
Sedona (VQ)

**W**hen an ABS/ESC warning lamp (MII) illuminates it should be investigated. To that point, some 2006–2007 Sedona (VQ) vehicles produced earlier than March 8, 2006 may exhibit this condition. Various DTCs such as C2402 or U0001 also may be stored in the control module or the Universal Scan Tool may not be able to communicate with the ABS/ESC system at all.

Although this situation needs attention, do not replace an ABS/ESC unit without first applying the procedure described in this article. These symptoms may result from poor grounds at g19 and/or g20 caused by paint remains between the bolt and mating weld nut attaching the ground terminal to the body. Remember, too, that other poor connections may exist, and should also be checked prior to any part replacement.







Gray lock tab shown here in the released (outward) position.

### Repair Procedure

**1** Remove the four bolts from the engine cover and set it aside.

**2** Disconnect the Mass Air Flow Sensor's (MAF) electrical connector.

*Note: Slide the gray colored lock tab slightly in the direction indicated by the arrows in the photograph, which will expose the release tab for the connector. If this is not done first, the MAF connector will be damaged.*

*Gray lock tab is shown here in the released (outward) position.*

**3** Loosen the hose clamps at the MAF and throttle assembly. Remove and lay aside the air intake hose as shown, so it's out of the way.

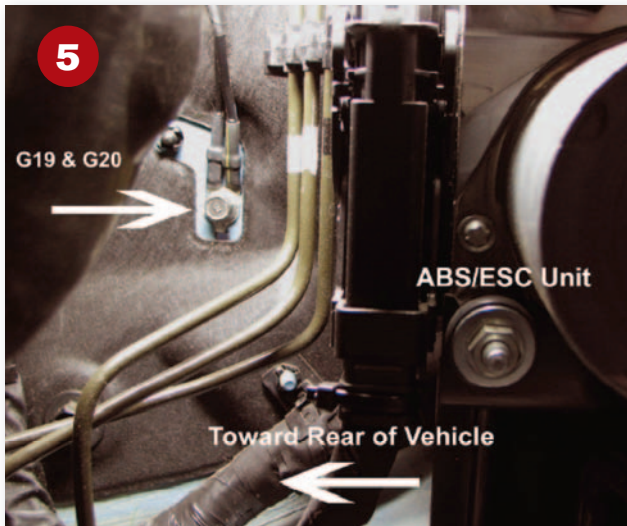
**4** Release the two spring clips that attach the air filter assembly cover. Remove the cover (with MAF attached) and the air filter insert. This will allow better access to g19 and g20.



**⚠ WARNING:** Do not attempt without the proper skills, training, or tools. Vehicle servicing performed by untrained persons could result in injury to those persons, to others, or to the vehicle.

ⓘ This and other technical information is available at [www.Kiatechinfo.com](http://www.Kiatechinfo.com).

ⓘ All images are for illustration purposes only.



**5** Locate the ground point for g19 and g20. It is located behind and close to the ABS/ESC unit on the IH (driver's) side outward panel.

**6** Using a 1/4" drive ratchet, 14" extension and 10mm flex / swivel socket, reach behind the ABS/ESC unit to remove the g19 – g20 ground bolt.

You may need to insert your other hand over top of the ABS/ESC unit (between the brake fluid reservoir and PCM) to guide the socket onto the bolt head.

The bolt used for g19 – g20 is a self-tapping bolt, which collects debris when first inserted. The next steps will provide a procedure to clean and further remove any remaining debris from this bolt and its threaded hole.

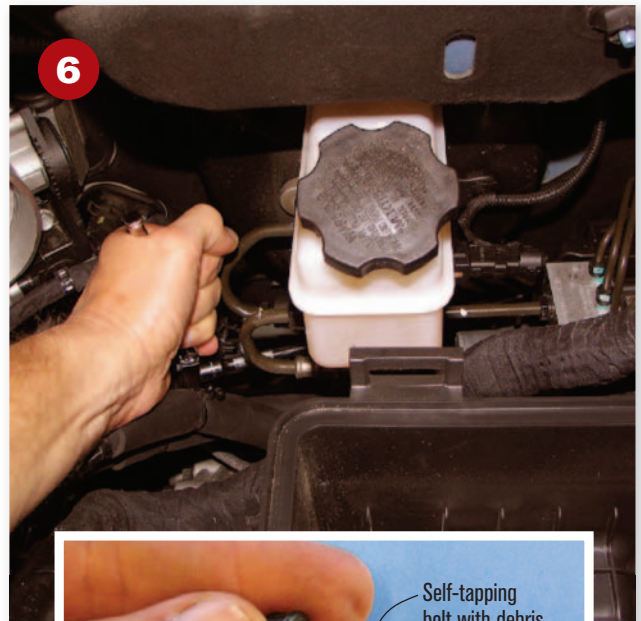
### Bolt cleaning procedure

**7** First, move the ground lug away from the threaded hole so no debris will collect on or between the ground surfaces during the thread cleaning process.

- Clean the removed bolt threads with a stiff bristle brush. (Do not use a wire wheel, as this can damage the bolt's self-tapping capability!)
- Reinstall the bolt fully without attaching the ground lug.
- Run the bolt in-and-out completely 3 times (without fully removing) to clean the body's threaded area.
- Once again, completely remove the bolt and clean the threads with a stiff bristle brush.
- Use compressed air to blow any remaining debris from the threaded hole, body surface and the self-tapping threads on the bolt.

### Reinstallation procedure

Reinstall the ground lug on the bolt and fully tighten the bolt to the body.



**Note:** Be certain that the hook on the ground lug is inserted into its mating hole when reinstalling the bolt. Otherwise, the ground lug may become deformed and not provide a proper ground.

Install all parts in the reverse order of removal. Clear any DTCs that may have been generated. Cycle the ignition key off, and then back on. Make sure the ABS/ESC light (MIL) turns on for the warning lamp check, and then turns off after several seconds. If the MIL comes back on, check for any stored DTCs and repair as necessary referencing the service information. **KIA**



# How do you tell a new Genuine Kia A/C compressor from a remanufactured Genuine Kia A/C compressor?

Answer: **The label.**

Otherwise, you can't tell the difference. That's because the reman part looks the same as a new part, fits the same as a new part, performs the same as a new part and has the same warranty as a new part. In other words, a Genuine Kia part is a Genuine Kia part, whether it is new or reman.

How is this possible? We have an extensive reengineering process that assesses cores individually — by closely inspecting, cleaning, dismantling, and checking and evaluating them for defects. Then they are brought back to OE spec with new and updated components. In effect, what was used is new again.

You can install this Genuine Kia reman A/C compressor — or any Genuine Kia reman part — with complete confidence that it will work like a new part. That's peace of mind for you and your customer. And all at a reduced cost to the customer which builds confidence in you.

**Genuine Kia Reman parts  
— every bit as Genuine as  
new Genuine Kia parts.**



**Genuine Parts**

\*Contact your local Kia dealer today for assistance and delivery of your parts.

Kia Genuine remanufactured parts sold by Authorized Kia Dealer under warranty are covered for the greater of (1) the duration of the New Vehicle Limited Warranty or (2) the first 12 months from the date of installation or 12,000 miles. Labor charges not included when not installed by an Authorized Kia Dealer. Warranty is limited. See retailer for details or go to [kia.com](http://kia.com).



# Spring has sprung!

And so have your service and maintenance opportunities.

Winter has taken its toll on your customers' vehicles. All vehicle operating systems have been challenged and possibly compromised by severe conditions. And just around the corner are summer's severe conditions.

When you get your customers' vehicles up on your lifts, there's no telling what a multi-point inspection will reveal.

Belts could be cracked. Hoses could be leaking. Filters could be plugged. Batteries could be spent. Wiper blades could be streaking. Lights could be dimmed or burnt out. Steering and suspension parts could be worn or broken. Brakes could be shot. Exhaust could be leaking. Gears could be grinding. Engines could be misfiring.

The crux of the matter is that vehicles driven through the winter are probably not running as efficiently or as safely since they were serviced last fall for winter driving.

To help bring your customers' vehicles back up to spec, we recommend installing Genuine Kia replacement parts. Engineered specifically for Kia vehicles to meet the manufacturer's highest standards of quality, function and fit, you can install every Genuine Kia part with confidence...for this season or any other.

\*Contact your local Kia dealer today for assistance and delivery of your parts.



Genuine Parts